



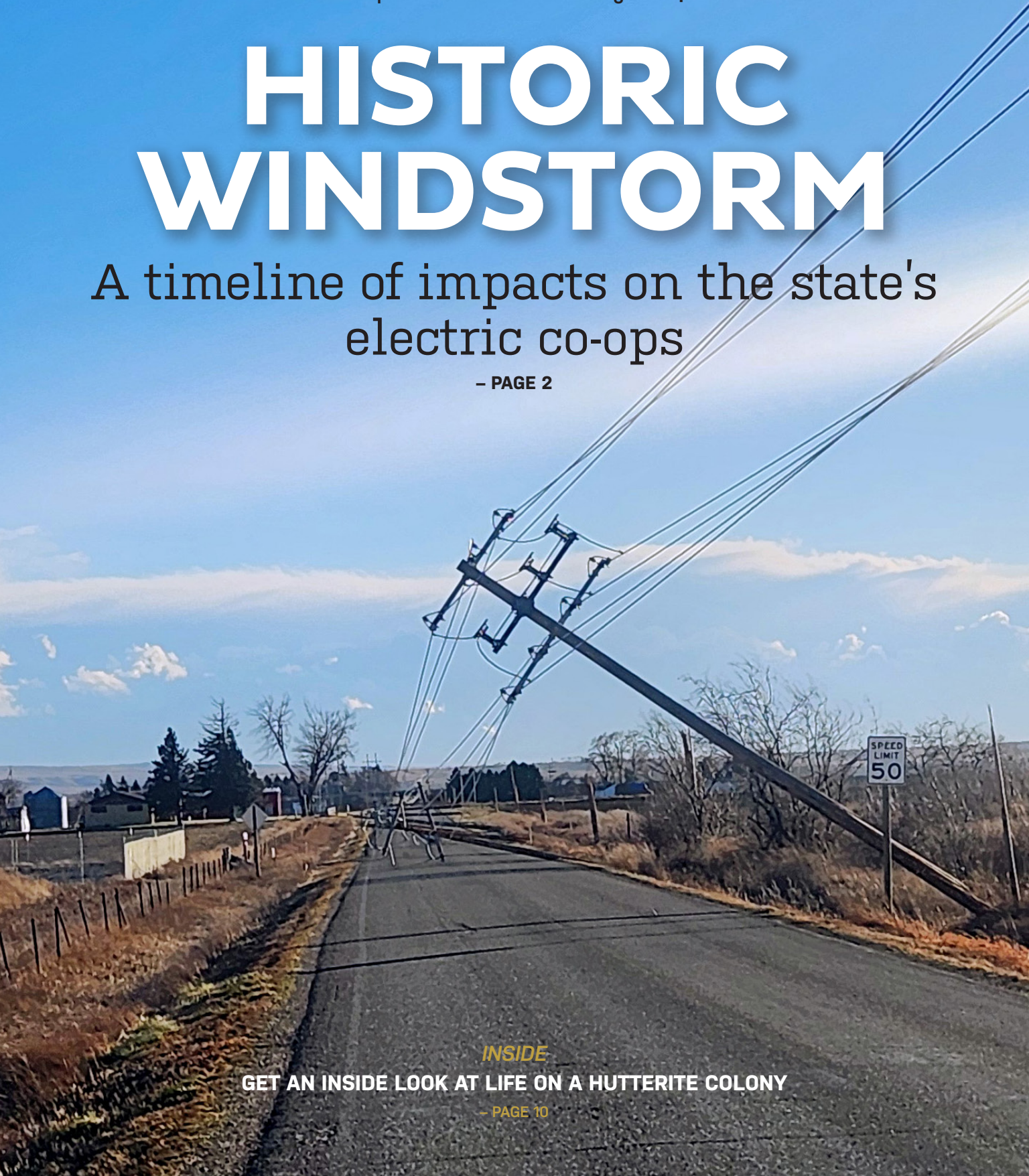
Rural Montana

Montana Electric Cooperatives' Association Magazine | FEBRUARY 2026

HISTORIC WINDSTORM

A timeline of impacts on the state's
electric co-ops

— PAGE 2



INSIDE

GET AN INSIDE LOOK AT LIFE ON A HUTTERITE COLONY

— PAGE 10

FEATURES

2

Statewide Storm

A timeline of the devastating December windstorm

12

Remembering the N-Bar

Stories from the famous ranch

10

Life on a Colony

Community is central to life on a Hutterite Colony

Rural Montana

Montana Electric Cooperatives' Association Magazine | JUNE 2025

READER EDITION

FOURTEENTH ANNUAL



4

Call for Submissions

Submit your story or picture for our Readers Edition

Rural Montana

February 2026

Vol. 72 | No. 2

(ISSN0199-6401)

DEPARTMENTS

1 | Viewpoint

4 | Face of Montana

9 | Dateline D.C.

14 | Recipes

15 | Events Calendar

16 | Young Montanans

MONTANA ELECTRIC COOPERATIVES' ASSOCIATION STATE BOARD OFFICERS

DeeDee Isaacs | **Pres.** | **TONGUE RIVER**

Dennis Nelson | **Vice Pres.** |

LOWER YELLOWSTONE RURAL

Jodi Stiehl | **Sec.-Treas.** | **FALL RIVER RURAL**

Joe Sisk | **NW Dir.** | **MARIAS RIVER**

Nick Siebrasse | **NE Dir.** | **HILL COUNTY**

Dean Peterson | **SW Dir.** | **VIGILANTE**

Chris White | **SE Dir.** | **YELLOWSTONE VALLEY**

COOPERATIVE DIRECTORS

Jim Neu | **BEARTOOTH**

Alan Wasson | **BIG FLAT**

Derek Sorley | **BIG HORN COUNTY**

Terry Frost | **FERGUS**

Stacey Schnebel | **FLATHEAD**

Jim Taylor | **GLACIER**

Robert Makelky | **GOLDENWEST**

Marianne Roose | **LINCOLN**

Brent Kluth | **MCCONE**

Reese Stahl | **MID-YELLOWSTONE**

Dena Hooker | **MISSOULA**

Steve Klatt | **NORTHERN LIGHTS**

Chris Christensen | **NORVAL**

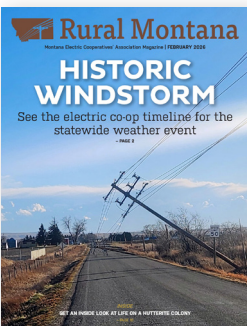
Bert Otis | **PARK**

Brien Weber | **RAVALLI COUNTY**

Jody Lagerquist | **SHERIDAN**

Dave Hayden | **SOUTHEAST**

John Burgmaier | **SUN RIVER**



COVER

About our cover:
High winds knocked down power poles across the state. |
PHOTO COURTESY OF
YELLOWSTONE VALLEY
ELECTRIC COOPERATIVE



RURAL MONTANA (ISSN0199-6401)

is an official publication of Montana Electric Cooperatives' Association and is published monthly by Montana's rural electric cooperatives in the interest of better rural and urban understanding of the benefits and the problems of rural utilities. Vol. 72 | No. 2

MANAGING EDITOR | Mark Lambrecht

COMMUNICATIONS DIRECTOR,

EDITOR | Ryan G. Hall

GRAPHIC DESIGN | Nick Daniels

OFFICES | 501 Bay Drive, Great Falls, MT 59404

TELEPHONE | (406) 761-8333

FAX | (460) 761-8339

WEBSITE | www.mtco-ops.com

E-MAIL | rural@mtco-ops.com

CHANGE OF ADDRESS | Mail change of address to your local rural electric cooperative, or if the code ME is above your name, the Rural Montana office, P.O. Box 3469, Great Falls, MT 59403. Please include the mailing label from a recent issue of Rural Montana.

SUBSCRIPTIONS | \$10 per year.

POSTMASTER | Published monthly by Montana Electric Cooperatives' Association, 501 Bay Drive, Great Falls, Montana. Periodicals postage paid at Great Falls, Montana, and at additional mailing offices. Postmaster send address corrections to P.O. Box 3469, Great Falls, MT 59403.

COPYRIGHT©2026 MONTANA ELECTRIC COOPERATIVES'

ASSOCIATION. No advertising or editorial content of Rural Montana magazine may be reproduced without permission of the publisher.

UNSOLICITED LETTERS, PHOTOS AND MANUSCRIPTS ARE WEL-

COMED. RM assumes no responsibility for their safekeeping or for their return.

CEO | Viewpoint



You think you know someone

MARK LAMBRECHT, CEO of Montana Electric Cooperatives' Association




SEVERAL weeks ago, Mike Milburn invited me to visit his home near Cascade for breakfast and to discuss a few issues before the Northwest Power and Conservation Council. Mike is chair of the organization, which is responsible for developing regional power plans and fish and wildlife programs for the Columbia River Basin.

I first met Mike in 2005, when he was a member of the Montana House of Representatives and I was a lobbyist for a Montana electricity generation company. We stayed in touch over the next two decades, but it wasn't until that morning at his ranch that I learned about his fascinating background and connection to the early days of electric cooperatives.

As I admired the collection of old photographs on his wall, Mike explained they were from the famed N Bar Ranch in central Montana, where he was raised. After hearing several captivating stories about his grandfather, who co-owned the ranch, I asked RM Editor Ryan Hall to sit down with Mike to tell his story, which is included in this issue.

That same day, Ryan mentioned he

was considering a story on Hutterite colonies. I asked what angle he planned to take. Ryan explained that Hutterite colonies are found all over the state, many are served by electric cooperatives, yet few people truly understand what they are. My first thought was, "I've talked to dozens of Hutterites who shopped at the sporting goods store where I worked in high school, and I've hunted on several colonies around the state. I know all about them!" As it turns out, after reading Ryan's story, I realized I didn't know much at all.

These two stories made me reflect on how much we think we know about people and how little we actually do. That, to me, is a big part of why our country feels so divided right now. It's easy to dismiss opposing viewpoints based on what we read on social media, see on the news or hear on the radio. I'd like to believe there's still a chance we can come together if we take the time to have meaningful conversations and truly learn about one another. 

SUBSCRIBE to

If you are not receiving **Rural Montana** from your local cooperative and would like to receive the magazine, or you want to give a subscription as a gift, you may purchase one for a yearly fee of **\$10**.

☐ **YES!** I'd like to subscribe.
(12 issues a year at \$10).

☐ Check ☐ Money Order ☐ Cash ☐ Credit Card

Name

Address

City State Zip

Phone ()

Payment must accompany your order.

CREDIT CARD INFO.

Card Type: ☐ Visa ☐ Mastercard ☐ Discover

Exp. Date:

Card Number:

Mail to: Rural Montana, P.O. Box 3469
Great Falls, MT 59403



Windstorm wreaks havoc

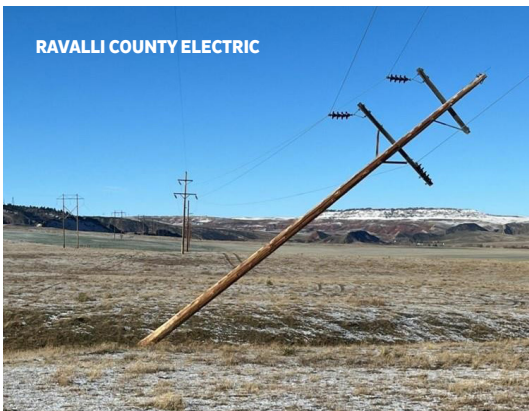
WINDSTORM TIMELINE: DEC. 17



on co-ops across the state

On Dec. 17, high wind warnings across the state turned to reality as trees were knocked over onto powerlines, power poles were snapped and wide outages reported. On these two pages is a timeline of how a majority of the state's electric cooperatives were impacted, highlighting wind speeds, the first outages, peak outages and when power was restored.

WINDSTORM TIMELINE: DEC. 18-24



DEC. 18

- ▲ 2:30 a.m. Majority of **Big Flat Electric** members back in service
- ▲ 2:45 a.m. Majority of **Beartooth Electric** members back in service
- ▼ 5:45 a.m. **NorVal Electric**: 419 members out
- ▼ 7: a.m. **Missoula Electric**: 4,833 members out
- ▲ 7:22 a.m. All **Vigilante Electric** members back in service
- ▲ 9:48 a.m. 85 mph winds reported in **Livingston**
- ▲ 10:45 a.m. 60 mph winds reported in **Pryor**
- ▲ Noon Last **Sun River Electric** member back in power
- ▲ 2 p.m. Majority of **McCone Electric** members restored
- ▲ 2 p.m. Final member of **Southeast Electric** power restored
- ▼ 2:48 p.m. 3,000 **Lincoln Electric** members out of power
- ▼ 2:50 p.m. **NorVal Electric**: 24 members out
- ▲ 3 p.m. All **Beartooth Electric** members back in service
- ▲ 7:15 p.m. All **NorVal Electric** members power restored
- ▼ 10:27 p.m. 300 members of **Lincoln Electric** without power
- ▲ 10:30 p.m. Last of **McCone Electric** members' power restored
- ▲ 11 p.m. 99 percent of **YVEC** members have power

DEC. 19

- ▲ 3 a.m. 96 mph winds reported in **Mount Aeneas (Bigfork area)**
- ▲ 5:48 a.m. 86 mph winds reported in **Livingston**
- ▲ 10 a.m. Final **Yellowstone Valley Electric** member had power restored
- ▼ 3:45 p.m. 200 **Lincoln Electric** members without power
- ▲ 8:30 p.m. **Park Electric**: All members power restored
- ▲ 9 p.m. All **Big Flat Electric** members power restored
- ▲ Late evening Majority of **Flathead Electric** members' power restored

DEC. 20-24

- Dec. 20, 7 a.m. **Missoula Electric**: Peak workers dispatched (more than 50 lineworkers, tree crew and contractors)
- ▲ Dec. 20, 6:10 p.m. All **Ravalli Electric** members' power restored
- ▲ Dec. 20, end of day All **Lincoln Electric** members back in power
- ▼ Dec. 21, 7 a.m. **Missoula Electric**: 636 members out
- ▲ Dec. 22, 7 p.m. All **Northern Lights** members' power restored
- ▲ Dec. 23, 11:45 p.m. Last **Big Horn County Electric** member restored
- ▲ Dec. 24, 3 a.m. All **Missoula Electric** members' power restored
- ▲ Dec. 24, 10 a.m. Last **Flathead Electric** member's power restored

Send Reader Issue content

WANTED: Reader stories, poems and photos

BY **RYAN HALL** | RURAL MONTANA EDITOR

HOW quickly time flies when you're having fun! We can't believe that this year will mark our 15th edition of the annual *Rural Montana* Reader Issue.

In 2012, *Rural Montana* debuted its Reader Issue, a unique concept among statewide electric co-op magazines where we turn over nearly the entire magazine to our members.

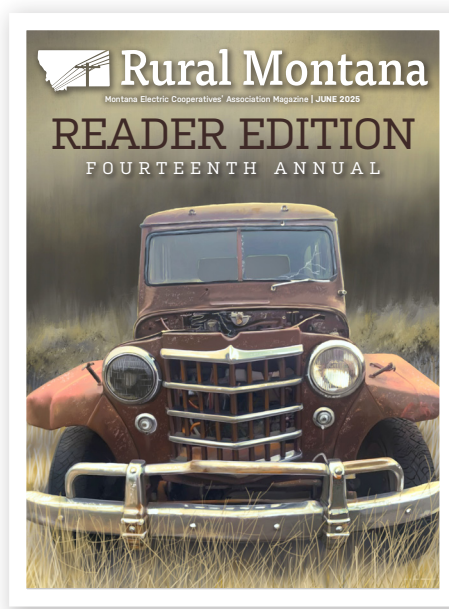
We are asking for your help as we begin preparing for this year's *Rural Montana* Reader Issue, which will take place in June. So find your trusty pen, pull the comfy chair in front of the computer or dust off your camera — this issue will be comprised almost exclusively of content you provide.

All submissions must be received by April 1, and must be your own, *original*

work. ***You must include your address and phone number to be considered for publication — submissions without this information will be disqualified.***

Below you can find more specific information on how to get your work published in the state's largest monthly magazine — and seen by about 40 percent of the state's population — as well as what you can expect to get paid if your submission is used:

If you have any questions, call Editor Ryan Hall at 406-761-8333. ***To submit stand-alone photos, email rural@mtco-ops.com. Send stories (and related photos) to ryanh@mtco-ops.com,*** or mail any item for submission to *Rural Montana*, PO Box 3469, Great Falls MT 59403. **Good Luck!**



COVER PHOTO

\$100

- Pictures or paintings of paintings must be digital (original and hard copies of drawings and paintings are allowed), **vertical**, at least 300 dots per inch (dpi) and at least 12-inches tall by 10-inches wide. **No photo prints please.**
- Please leave open space, such as sky, at the top for the name of the magazine.
- Be creative. Your photo, drawing or painting can be a landscape, wildlife, people, anything — as long as it's appropriate for all ages. And remember, *Rural Montana* has a policy to not run photos of dead animals.

OTHER PHOTOS

\$10-\$50, depending on size and placement

- All things being equal, unique subjects and creativity typically win. Montana's sunsets and sunrises are undoubtedly among the best in the world, but we probably get 10 pictures of them each month, and double that ahead of the Reader Issue. The same goes for wildlife, so if you plan on submitting a photo of an elk or an eagle, choose one that is unique in some way. Humor — either in the subject matter or the caption — is encouraged.

STORIES AND POEMS

\$10-\$25, depending on if photos are involved

- Personal, historical, humorous or uniquely Montana stories tend to resonate with our readers.
- Works of fiction are allowed, but please clearly mark it as such.
- Stories with photos get first consideration. Photos must be 300 dpi and at least 4 inches by 6 inches. **Digital photos are required**, with an exception made only for historical photos, with editor approval. If you send a photo from a cellphone, please make sure you select the "send as original size" option.
- Keep stories and poems to a maximum of **450 words**, with one or two photos. ***Longer stories without prior approval from the editor will be disqualified.*** Stories must be submitted electronically (emailed or sent on a jump drive). Please no handwritten submissions.
- Any use of artificial intelligence to create a story or photo must be disclosed.



Reliability requires investment

by **Jason Brothen, CEO**



Brothen

As your local power provider, Lower Yellowstone Rural Electric Cooperative (LYREC) has always had a simple mission: Keep the lights on and support the communities we serve. But behind every switch, every warm home and every successful business is a complex system that requires constant attention.

Reliable electricity doesn't happen by accident. It depends on ongoing investments in our local grid through regular maintenance, system repairs, infrastructure upgrades and the integration of new technologies that allow us to operate more efficiently and effectively.

Much of the electric system on which we rely today was built decades ago. While it continues to serve us well, aging infrastructure must be repaired to maintain performance and safety. From poles and wires to transformers and substations, every part of the grid has a lifespan. Routine maintenance helps extend that lifespan, but eventually equipment must be updated to meet modern standards. These investments reduce the risk of outages, shorten restoration times when disruptions do occur and create a stronger backbone for our growing community.

Demands on the electric grid are also evolving. Homes and businesses today use more electricity than ever, and the growth is expected to continue. Electric vehicles, advanced HVAC systems, smart appliances and new commercial facilities are adding significant load to the local distribution system. As these technologies become more widespread, the grid must be capable of supporting increased demand, while maintaining the reliability our members expect.

Strategic investments, such as upgrading or constructing new substations and transmission lines, replacing aging infrastructure and increasing distribution voltage to meet LYREC's needs, are critical to ensuring we can meet both current demands and those in the decades ahead.

At the same time, emerging technologies are transforming how we operate. Tools such as supervisory control and data acquisition systems or SCADA, smart meters, automated sensors and switches, and drones enable faster problem detection and more effective response. These technologies allow us to isolate issues, reroute power to minimize outages and access real-time data that improves system planning, maintenance and system reliability.

Implementing innovative technologies into the grid is no longer a convenience. It is essential in maintaining reliability in an increasingly complex energy environment.

While these improvements require careful planning and financial investment, the benefits are substantial. A stronger grid supports economic growth, improves service quality and enhances safety for our crews and community. Most importantly, it ensures reliable power is available when you need it most.

Our commitment to reliability runs deeper than infrastructure alone. It reflects our responsibility to our members and communities. Every upgrade, every repair and every technology we deploy is an investment in your daily life – from the comfort of your home to the success of local businesses and schools.

Powering our community means preparing for the future, not just maintaining the present. By investing in our local grid today, we are laying the groundwork for a stronger, more resilient tomorrow. ■





As winter blankets North Dakota in snow, Lower Yellowstone Rural Electric Cooperative reminds members to stay safe, particularly when traveling. Remember these tips for safe winter travel:

Before you leave

- Check road conditions BEFORE you travel. Consider postponing nonessential travel until the roads are cleared.
- Carry a cellphone that's fully charged.
- Let someone know when you depart, your route and expected arrival time.
- Dress according to weather conditions. Keep dry and wear clothing in layers.
- Always leave with a full fuel tank.
- Make sure everything is functioning properly on your vehicle. Tires should have all-season treads and be in good condition.
- Make sure your wiper blades are in good condition. Keep the windshield washer reservoir filled with antifreeze solvent.
- Check the radiator, heater core and all hoses that carry antifreeze solution to make sure they are in good condition and free of leaks.
- Emergencies can happen when you least expect them, so be sure to carry a winter survival kit in your vehicle.

On the road

- Turn on your lights. This will increase your visibility to other motorists and snowplow operators. Brush snow from your car that could cover your lights or create visibility problems.
- Slow down and drive according to the conditions.
- Never drive through "whiteouts" or "snow fog" caused by wind or plowing snow. Wait until you can see.

- Stay back at least five car lengths behind the snowplow; snowplow operators will pull over when it is safe to allow traffic to pass.
- Never use cruise control on wet or icy roadways.

If you are stranded

- Stay with your vehicle.
- Run the engine sparingly. Start with 15 minutes every hour and adjust if needed.
- Keep the exhaust pipe clear of snow.
- Keep your feet off the floor if the heater is not on.
- Never go to sleep with the engine running.
- Tie a colorful banner on the car antenna.
- Move all your emergency supplies from the trunk to the interior of the car as soon as you realize you will be staying for a while. Put on warm clothing now, before you get cold. It is easier to stay warm than it is to regain lost warmth. Loosen tight clothing so body heat can circulate.

Pack a survival kit

- Several blankets and warm clothing, such as a parka, boots, heavy socks, mittens and ski mask.
- A source of heat, such as a multiple wick candle can heater. It is best to also have matches to light your candle, because some lighters won't work in extreme cold.
- A flashlight with extra batteries.
- Non-perishable food and water.
- Bright red or orange cloth to mark your vehicle.
- Repair tools such as pliers, wrenches, screwdrivers and a pocket knife.
- Tire chains, booster cables, tow rope, warning devices and a container of sand or cat litter.
- Snow shovel, broom and ice scraper.
- First-aid kit.
- Cellphone and charger. ■

Nominating Committee to meet in March

The Nominating Committee will meet on Tuesday, March 3, at the Lower Yellowstone Rural Electric Cooperative (LYREC) office. The purpose of the Nominating Committee is to select candidates for the board of trustees.

The Nominating Committee will consist of two members each from District 5, District 6 and District 7. The committee will nominate one or more candidates for these districts. The present trustees representing these districts are Dennis Nelson in District 5, Greg Rauschendorfer in District 6 and Allen Thiessen in District 7.

Nominating Committee members are:

- **Representing District 5** – Kirk Panasuk and Mike Wilson
- **Representing District 6** – Kyle Koppinger and Cheyanne Rauschendorfer
- **Representing District 7** – Brian Ligon and Lana Watson



Nelson



Rauschendorfer



Thiessen

If you are a member of LYREC, reside in Districts 5, 6 or 7 and are interested in becoming a candidate for the board of trustees, contact one of the Nominating Committee members and ask to be considered for nomination.

If you have a joint membership, either member on the account can run for the board seat. A joint membership is entitled to one vote at any meeting of the cooperative. ■

Apply for scholarships!

The Montana Electric Cooperatives' Association (MECA) is offering a \$500 scholarship to one eligible student from the northeast district of Montana. The applicant's parent(s)/guardian(s) must be a Lower Yellowstone Rural Electric Cooperative (LYREC) member, and the applicant must be attending college in the fall of 2026. Applications are judged based on academic strength, school and community activities, employment, volunteerism, community service and a personal statement.

A committee comprised of LYREC staff will choose one application to advance to MECA for a chance to win a \$500 scholarship. In addition, LYREC will award a \$500 scholarship to the chosen applicant it sent to MECA. This will give the selected applicant a chance to earn a total of \$1,000. To apply, complete the required criteria and submit by 5 p.m. on March 5.

Basin Electric Power Cooperative is offering two scholarships to a LYREC member dependent. The first place winner will receive \$1,500 and the second place winner will receive a \$1,000 scholarship. The applicant must be a student enrolled in a full-time undergraduate course of study at an accredited two-year or four-year college, university or vocational/technical school in the fall of 2026.

Scholarship recipients are selected based on academic record, leadership and participation in school and community activities, honors, work experience,

a statement of education and career goals, and an outside appraisal. To apply, complete the required criteria and submit by 5 p.m. on Feb. 11.

Download an application at lyrec.coop. Send application to: LYREC, Attn: Jami Propp, P.O. Box 1047, Sidney, MT 59270 or email to scholarships@lyrec.coop. ■



Denowh wins Youth Tour essay contest



Denowh

Danica Denowh has been named the Electric Cooperative Youth Tour essay contest winner. Danica, the daughter of Chad and Jennifer Denowh, is a junior at Sidney High School. In June, Danica and more than 20 other delegates from Montana will join more than 1,800 students from across the country in Washington, D.C.

This once-in-a-lifetime experience isn't just about seeing the nation's capital. It's about preparing students to lead, grow and make their mark on the world.

Thank you to all the applicants who took the time to submit an essay. LYREC will share Danica's journey in June on our social media sites. We look forward to hearing about the Youth Tour and the impact it has on the delegates.

Nondiscrimination statement

Lower Yellowstone Rural Electric Cooperative is a recipient of federal financial assistance from the U.S. Department of Agriculture (USDA). The USDA prohibits discrimination in all of its programs and activities on the basis of race, color, national origin, age, disability and, where applicable, sex, marital status, family status, parental status, religion, sexual orientation, genetic information, political beliefs, reprisal or because all or a part of an individual's income is derived from any public assistance program. (Not all prohibited bases apply to all programs.) Persons with disabilities who require alternative means for communication of program information (Braille, large print, audiotope, etc.) should contact USDA's TARGET Center at 202-702-2600 (voice and TDD). To file a complaint of discrimination, write to USDA, Director, Office of Civil Rights, 1400 Independence Ave. SW, Washington, DC 20250-9410 or call 800-795-3272 (voice) or 202-720-6382 (TDD).

Lower Yellowstone Rural Electric Cooperative is an equal opportunity provider and employer.



3200 W. Holly - Sidney, MT 59270

Phone: 406-488-1602


Website: lyrec.coop

TRUSTEES

Allen Thiessen	President
Greg Rauschendorfer	Vice President
Dennis Schmierer	Secretary/Treasurer
Colin Gartner	Trustee
Tim Franzen	Trustee
Dennis Nelson	Trustee
Jim Vitt	Trustee

EMPLOYEES

Jason Brothen	General Manager
Jami Propp	Member Service Manager
Pam Wilcox	Chief Financial Officer
Melissa Buckley	Plant Accountant
Kyle Kavanagh	IT Director
Katie Jochim	CSR/Billing Coordinator
Tiffani Hentges	Customer Service Representative
Chris Hillesland	Chief Operations Officer
Rich Gorde	Journeyman Lineman
Eric McPherson	System Controller
Kevin Goff	Operations Assistant
Kelly Keysor	Operations Manager
Aaron Eide	Journeyman Lineman
Bryan Franck	Journeyman Lineman
Jesse Obergfell	Journeyman Lineman
Tanner Roth	Journeyman Lineman
Ryder Peterson	Journeyman Lineman
Cole Jankovsky	Journeyman Lineman
Preston Long	Journeyman Lineman
Trey Schepens	Journeyman Lineman
Jory Bell	Apprentice Lineman
Nicholas Burke	Apprentice Lineman
Jaeger Gunville	Apprentice Lineman
Brandon Mueller	Master Electrician
Mike Eberling	Mechanic
Dan Gieser	EMS
Lee Alvstad	Mechanic/EMS
Richard Tremblay	EMS
Bo Kindopp	GIS/Easement Technician
Tom Hall	GIS Specialist
Corey Candee	Chief Information Officer
Jeremy Reese	Information Technology Technician
Edwin Gatzke	Line Locator/Groundsman
Justin King	Warehouse Supervisor
Parker Brothen	Groundsman

Your Touchstone Energy® Cooperative 

MONTANA U.S. REPRESENTATIVES

In order to allow ample space for responses, Rural Montana alternates asking Montana's senators and representatives the Dateline D.C. question each month. This month features the representatives. Next month, we will ask a question of the state's two senators.

THIS MONTH'S QUESTION:

"What are your top priorities for the 2026 congressional session?"

THE SAME QUESTION WAS ASKED TO MONTANA'S TWO U.S. SENATORS IN RM'S JANUARY EDITION




Rep. Zinke

512 Cannon House
Office Building,
Washington, D.C. 20515
<https://zinke.house.gov>
Ph: (202) 225-5628

Representative Ryan Zinke

As the representative of western Montana, I'm heading into 2026 focused on defending our Montana way of life and supporting the men and women who live and work here. For me, that starts with standing up for our public lands. I will continue to oppose any wholesale sale of public lands and fight to expand public access so Montanans can hunt, fish, hike, bike, kayak, camp, rock climb and enjoy what we all own. Protecting public lands also means expanding responsible resource development and keeping our lands working. We burn more feet of timber than we harvest every year, so active management and expanding timber harvests have never been more important. I'm also advocating for commonsense predator policies, including the full delisting of all grizzly bear populations, to protect ranchers and their livestock. Our public lands should be open for all uses by all people, and I will remain one of their strongest defenders here in D.C.

I'm also staying focused on infrastructure and public safety for our counties and rural communities.

More than \$8 million for water infrastructure and law enforcement needs across eight western Montana counties just passed the House, including upgrades to water systems in Philipsburg and Missoula County, and added support for sheriffs and first responders in Mineral, Lake, Beaverhead, Lincoln and Sanders counties. As a member of the Appropriations Committee, I'm working to get these funds signed into law and the funding delivered to the counties that need them. I also have more than \$20 million in funding for shovel-ready infrastructure projects for bridges and roads across western Montana. I will keep pushing to get those projects across the finish line to benefit our communities and improve the quality of life for all Montanans. My North Star remains unwavering: putting Montana first in every decision and delivering tangible results that improve the lives of Montanans across the state. I am confident the 2026 session of Congress will be a productive one, and I look forward to working every day to deliver for rural Montana. 



Rep. Downing

1037 Longworth, House
Office Building,
Washington, D.C. 20515
<https://downing.house.gov>
Ph: (202) 225-3211?

Representative Troy Downing

HELLO! Congressman Troy Downing checking back in. I appreciate the opportunity to share an update on my work with *Rural Montana*.

It has been an honor to represent Montana's Second Congressional District over the past year. My team and I have been hard at work returning millions of dollars to Second District constituents, securing funding for community projects across central and eastern Montana, and getting legislation passed through the House. I even had my first bill signed into law by President Trump.


This year, I hope to build upon this success by honing in on Main Street, ensuring burdensome regulation stays out of the way of Montana businesses and expanding access to capital for job creators, especially those in the rural areas that I represent.

In 2025, the House rolled back 22 regulations that hamstrung energy producers and small businesses alike. This included my H.J. Res. 104, which prevented an outright ban on coal leasing in the Powder River Basin and will proliferate affordable, reliable energy for Montanans across the Second District. I look forward

to maintaining this momentum in 2026.

House Republicans also passed the One Big Beautiful Bill Act, the most significant support for working families, small businesses, farmers, ranchers and energy producers our country has ever seen. I'm proud to have worked alongside my colleagues to deliver results for Montanans, and I can't wait to see many of the provisions enacted in this landmark legislation bear fruit come tax season.

Finally, last year, I introduced the Expanding Access to Capital for Rural Job Creators Act. This legislation ensures that rural Main Street receives the long-overdue attention it deserves from the SEC's Office of the Advocate for Small Business Capital Formation to allow these businesses to flourish. In the new year, I will be hard at work to get my bill signed into law.

If you have a question, require assistance or would like to learn more about arranging a meeting with me or my staff, please give us a call or stop by any one of our offices in Helena, Billings or Washington. Every day, I am humbled to serve you. It is truly the honor of a lifetime. 

LIFE ON A Hutterite Colony



Religion and community at center of colony traditions

STORY BY RYAN HALL | RURAL MONTANA EDITOR

THE good of the community and all its members is the top priority on a Hutterite colony.

Midway Colony near Conrad is a member of Sun River Electric Cooperative. Its pig barn, egg-laying facility/poultry barn, kitchen, laundry and homes are all powered by the co-op.

Built from 2004-2008, the colony spun off of the Miller Colony after that one topped 160 members.

"If you don't have enough work for everyone, the colony can't sustain itself," said David "Shorty" Hofer, colony secretary, in explaining why new colonies are built. He said the Midway Colony is currently at 102 members.

Life on the colony isn't much different than that on a farm in most ways. Everyone has a job and kids start working at a young age.

The differences come in the religious focus and the emphasis on success as a community, and community ownership of most assets.

"From an outsider looking in, you'd call it socialism," Hofer said, adding

that the difference, is the religious base to the Hutterites' system.

Importance of the church

Shorty said Hutterites are called that because they followed the teachings of Jakob Hutter, who founded the movement in 1528 to escape religious persecution. He mentioned that their way of life is very similar to that of Mennonites, as both came from the same movement out of the Catholic Church. Their Confession of Faith is also the same.

The entire colony attends church everyday at 5:30 p.m., where men and women sit separately, rather than as families. There is also a 90-minute service every Sunday morning. Children younger than age 6 do not attend church.

The first minister serves as the head of the colony. There is also a second minister, a secretary, the farm boss and several directors, which together form the colony leadership. The colony elects the ministers, which then must

be affirmed by other nearby colonies' ministers. The other leadership positions are decided by a popular vote on each colony, with no affirmation required.

Shorty noted that Hutterites are baptized at age 20, instead of at a young age, so they can choose to commit to God.

Farming as a way of life

The colony sustains itself through its farming operation — which is a lot more than just the produce many people see at summer farmer's markets across the state. Midway Colony also grows barley, wheat, lentils and canola, and raises animals.

Shorty said the colony is home to 50,000 laying hens, which produce organic eggs for Wilcox. They also raise about 7,000 fryer chickens a year, 1,500 sow pigs that are sent to the Midwest for finishing, 300 cows, 800 turkeys and 800 ducks. While the fryer chickens, pigs and turkeys are mostly sold, the ducks are used by the colony,

being served about once a week in the cafeteria.

Colony setup

Each family is given its own three-bedroom, two- or three-bath home, but very few things are owned individually.

"There's no individual checking account," Shorty explained. The money the colony makes from farming goes into the colony's account, and it provides for each family. All of the vehicles are owned by the colony and the trips must be approved by an official, usually the secretary at Midway Colony.

Shorty said that the person traveling to town will typically let the secretary and others know, and then a list of what anyone on the colony needs will be provided to that person, who will do the shopping for the whole colony.

There are also no individual kitchens or laundry in the homes, the cooking is done in the colony's kitchen, and meals are eaten together. The women sit at one set of tables, and the men at another. A community meal is served, with a blessing said before and after each meal. During the day, children who are in school eat after the adults.

There also is a community laundry room with six washers and three large dryers. "It's the most used building on the colony," Shorty said.

As far as schooling, Shorty said kids stay at home with their mom from birth until they are 2½ years old, then they attend little kid school until they are 6, at which point they start kindergarten.

Midway Colony has its own K-8 school on site. It is part of the Dutton-Brady School District, which provides the teachers. The children do have



ABOVE: A group of women on the Midway Colony near Conrad move butchered beef to be packaged and frozen.

LEFT: A cold-smoke room with a rack is where 3,000 pounds of sausage is smoked once a year, then used by colony members.



school events, such as a Christmas program, but there are no sports teams.

"We don't do sports," Shorty said.

Around age 6 or 7, the kids start rotating jobs, observing the adults working with calves, or in the chicken or hog barns. They also help with crop farming in the summer. Children attend school until eighth grade, at which point they start the apprentice program, learning from older colony members. Jobs are typically passed down within a family when they open up, so if your father is a mechanic, that will likely be your specialty as well.

"We've been able to get by with the apprentice system," Shorty said in explaining why the colony's children do not attend high school.


Jobs are specific to men and women.

Men do most of the farm, wood and metal work, while women cook, clean, sew almost all of the clothes colony members wear and do the finish butchering.

Hi-tech colony

Technology is more prevalent than one might expect, at least when it comes to work.

"We've (got) all the technology in the world. We utilize technology," Shorty said as he described the electronic feeding system in the hog barn. The colony mixes 15 tons of feed a day — hitting precise mixtures through an electronic system — and feeds hogs using technology that recognizes each animal and its feed needs through an ID tag. The system will even automatically order ingredients when the colony gets low.

Shorty said that almost everyone on the colony has a cellphone, but no smart phones are allowed. There is a cyber shack that is open each day from 6 a.m. until 6 p.m. It has three computers and Internet access, with some limits applied. There are no TVs on the colony, and members aren't permitted to watch TV or movies. There is no Internet access in any of the homes except the secretary's, who requires it for business purposes. 



LEFT: From left, Tom Wipf and Midway Colony Secretary David "Shorty" Hofer pose at the sign near the hog barn on the colony.

Memories of the N BAR RANCH

Milburn recalls grandfather managing, owning part of the ranch

STORY BY **RYAN HALL** | RURAL MONTANA EDITOR

THE famous N Bar Ranch in central Montana is known for many things, including being an integral part of bringing angus cattle to the state. But did you know it has ties to a prominent figure in Montana's energy sector?

Mike Milburn of rural Cascade currently serves as the chairman of the Northwest Power and Conservation Council, to which he was appointed by the governor. He previously served as Speaker of the House for the Montana House of Representatives. His grandfather, George Rozelle Milburn Jr. — better known as “Jack” Milburn — managed and co-owned the N Bar Ranch from 1930-1965. Mike’s father “Jack Jr.”, was raised on the ranch, as was Mike for much of his formative years.

“I was there from my birth until age 13,” Milburn said of one of the largest ranches in Montana.

He recalled attending a small country school during those years.

“I was the only one in my class,” Milburn said before cracking a wide smile. “I was the smartest one in my class. I brag about it. I don’t tell them I was also the dumbest.”

Memories of the N Bar

“It was the old cowboys who had the stories,” Milburn said in remembering his time on the now 200,000-acre ranch located 10 miles south of Grass Range, in Fergus Electric Cooperative’s service area.

“The characters who were hired at the time,” he said of the crew that came



Mike Milburn poses with his family's phone from his days on the N Bar Ranch. | **PHOTO BY RYAN HALL**

in for haying or working cattle, when asked about his most vivid memories from growing up on the ranch. “They were bow-legged as a barrel. That’s all they’d ever done (be cowboys).”

Milburn laughed as he remembered one hired man who enjoyed taming wildlife.

“He brought all types of things

home,” including an antelope the kids would play with, Milburn said.

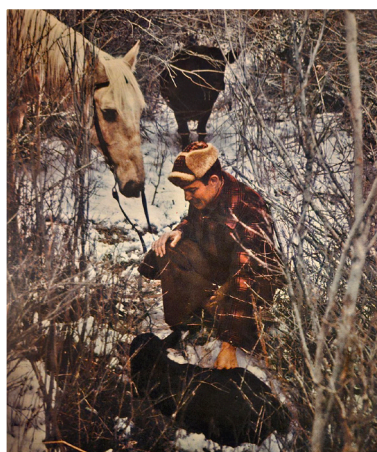
“It would get excited and start butting us when we were running,” he said.

He recalled a game warden asking the hired man how he got the antelope, guessing he rescued it from a dying mother.

“Nope, I just had a long rope and a

“The characters who were hired at the time, they were bow-legged as a barrel. That’s all they’d ever done (be cowboys).”

— **MIKE MILBURN**



fast horse," the man told the warden.

Milburn added that he wished he would have asked more questions of the cowboys who showed up to work on the ranch.

One was a tail-gunner on a B-17, and one would sweat profusely because he was gassed in World War II.

"All of those men could have told so many stories," Milburn said.

As he spoke, Milburn was only feet away from an old phone from the ranch that now hangs on his wall. It has a corded earpiece, a mouthpiece on the front of the wooden box and two large bells.

"Everyone had their own ring. Ours was three shorts and two longs. Every-one on Flat Willow Creek could hear it ring," Milburn said.

He also recalled his grandfather being one of the first Montanans to raise certified Angus cattle in the state, returning the ranch to its roots after years as a sheep operation.

The last time he drove through the ranch was two years ago, but he has flown over it more recently — which was an emotional experience.

"You can see what (Jack) put together. What a special person he was with a talent to be able to do it," Milburn said. "He knew how to get things done."

A Milburn Legacy

Milburn said his grandfather was involved in his community throughout his life.

He served as a board member for Montana Power, was on the school board, was president of the Montana Stockgrowers Association and served as president of the American National Cattleman's Association. He also was a founding member and inductee of the Montana Cowboy Hall of Fame.

"He was just in everything," Milburn said, adding that his grandfather also helped Fergus Electric Cooperative and the federal Rural Electric Administration bring reliable power to rural areas.

He said his grandfather was an important agriculture figure not just

in Montana, but nationwide, though Milburn wasn't aware of that until later in life.

"I didn't realize the gravity of the ranch or how important my grandfather was," Milburn said.

An Inspiration

Milburn said he has always admired his grandfather, and learned a lot from him. Jack was a humble man who accomplished many things that Milburn had never been told — he still discovers new things when doing family research. Those who know Milburn know he is cut from the same cloth.

"I don't ever talk about myself," he said, when pressed about his humble nature. "You just do it."

Milburn was an Air Force fighter pilot, following in the footsteps of Jack, who flew in World War I. Milburn said despite the family legacy, he was never pressured by relatives to join the military.

"No one said anything to me about it. I just thought it's what you did," he said.

Milburn said he wished he had known more about his grandfather's experiences.

"A lot of my grandfather's stuff occurred in my lifetime," Milburn said. "You wish you would have asked more questions."

He said he would have liked to ask Jack about how difficult the 1930s and '40s were, and about his service in World War I.

"I would ask him about the emotional stress of the war both on the ground and in the air," Milburn said. "What were they thinking when the chance of survival was so low?"

He said that even today he frequently thinks of Jack, who pinned his wings on Milburn when he became a pilot.

"My grandfather means a lot to me. He's stayed with me," Milburn said. "He was someone I always admired, a role model for me." RM

SEND IN YOUR RECIPES

Recipes for *RM* magazine are submitted by cooperative members across the state. First, second and third place monthly winners are awarded \$30, \$20 and \$10 prizes, respectively. Send your recipes to *RM* Recipes, Box 3469, Great Falls, MT 59403, or email rural@mtco-ops.com. **Please include your name, hometown and an address. If you do not include this information, your submission will not be accepted.** For March send your favorite Irish-inspired recipe or dish that is green in color (mostly) by February 12. Please send in April recipes anytime: Your favorite recipe that uses cream cheese. Try to limit the ingredients and length of directions for space. Please include a photo, if possible.

**1st
PLACE**

Warm Melting Chocolate Cake

Diane Carter | MOLT

INGREDIENTS

- 6 oz. chocolate (recipe calls for dark chocolate but you can use dark, semi-sweet or milk chocolate chips or bar)
- 6 oz. butter
- 4 eggs (room temperature)
- 6 oz. sugar
- 6 T all-purpose flour

DIRECTIONS

1. Melt butter and chocolate (this can be done in the microwave if watched closely)
2. Mix eggs and sugar and whisk together for a few minutes. Stir in flour. Do not use a mixer as it will incorporate too much air into mixture.
3. Add the egg mixture to the melted chocolate and stir until combined.
4. Pour the mixture into 4 greased ramekins. (I used 4 6-oz. ones)
5. Bake at 390 degrees for 14-19 minutes until a toothpick inserted 1/2 inch from edge is clean. The edge should slightly crisp, but the center should not be totally set. Dust top with powdered sugar.
6. Serve with vanilla ice cream.



STAFF
FAVORITE

Hot and Spicy Pepper Steak

Lea Potoczny | MECA CHIEF OPERATING OFFICER

INGREDIENTS

- 2 pounds thin top round steak, sliced into strips about 1/4 inch thick
- 1-1/2 T Spice Blend, recipe follows
- 3 T all-purpose flour
- 1/4 cup vegetable oil
- 3 cups chicken broth, divided
- 6 cups sliced onions
- 2 cups sliced bell peppers
- 3 teaspoons salt
- 1/4 tsp. cayenne
- 1/4 tsp. freshly ground black pepper

Egg noodles or white rice for serving

Spice Blend:

- 1 T dried oregano
- 2-1/2 T paprika
- 1 T dried thyme
- 2 T salt
- 2 T garlic powder
- 1 T black pepper
- 1 T onion powder
- 1 T cayenne pepper

DIRECTIONS

Combine the meat with the spice blend and flour in a mixing bowl and toss to combine.

Heat the oil in a large cast iron Dutch oven or high-sided skillet over medium-high heat and brown the meat, in batches, until browned on all sides, 4 to 5 minutes. Remove meat from the pan.

Add 2 cups chicken broth to the pan and stir, scraping the bottom and sides of the pan to loosen any browned particles.

Add the onions, bell peppers, salt, cayenne and black pepper.

Cook, stirring frequently, for 6-8 minutes, or until the vegetables are wilted.

Return all the meat to the pan, reduce the heat to medium, cover and cook, stirring occasionally, for 15 minutes.

Add the remaining cup of broth and continue to cook, uncovered, for about 1 hour longer, or until the meat is very tender and the gravy is thickened and flavorful.

Serve immediately over egg noodles or white rice.



Events Calendar

Events | What's Happening?

SUBMIT YOUR EVENTS

To list an event, send it to: RM Events, PO Box 3469, Great Falls, MT 59403 or email us at: rural@mtco-ops.com — Submit items by February 12 for March events. Include date, time, site, city and contact number with your event. **Events without such info will not be used.**

NORTHWEST

February 1

John White Series presents Kira Powell on fire lookouts — Northwest Montana History Museum, 2 p.m., 756-8381 | **KALISPELL**

February 10

Northwest Montana Photographers meeting — Fellowship Church, 7 p.m., 260-0086 | **COLUMBIA FALLS**

February 15

John White Series presents Souta Calling Last on Blackfoot place mapping — Northwest Montana History Museum, 2 p.m., 756-8381 | **KALISPELL**

February 16

Westerners Int'l presents "The Birth of Kalispell" by Bruce Guthrie — Northwest Montana History Museum, 6:30 to 8 p.m., 309-0958 | **KALISPELL**

February 17

Kalispell Women's Connection Luncheon — Guest speaker is Jade Owens, 1830 Hwy. 35, 11:30 a.m., call 261-9894 for reservations or information | **KALISPELL**

February 18

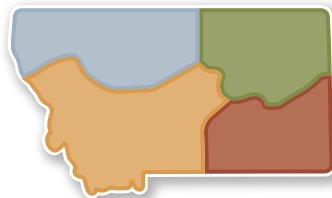
Columbia Falls Women's Connection Luncheon — Guest speaker is Jade Owens, 827 9th St. West, 11:30 a.m., call 892-3621 for reservations | **COLUMBIA FALLS**

February 20

Open house for exhibit update — Northwest Montana History Museum, 2 to 4 p.m., 756-8381 | **KALISPELL**

February 21

Ferndale Sewing Circle Souper Fundraiser — S. Ferndale Dr., 4 to 7 p.m., 890-4368 | **BIGFORK**



February 21-22

Seize the Day Flathead Presents Beat the Winter Blues Pop Up Market — Northwest Montana Fairgrounds Expo Building, Sat: 9 a.m., to 5 p.m., Sun: 10 a.m. to 4 p.m., 885-9913 | **KALISPELL**

February 23

Flathead Valley Community Band Chamber Concert — First Presbyterian Church, 7 p.m., 270-1696 | **KALISPELL**

March 1

John White Series presents Marty Boehm on the early days of ALERT — Northwest Montana History Museum, 2 p.m., 756-8381 | **KALISPELL**

March 14-15

NWMT Rock & Gem Show — Kalispell Fairgrounds, Sat: 9 a.m. to 6 p.m., Sun: 10 a.m. to 4 p.m., 250-1936 | **KALISPELL**

March 16

Westerners Int'l presents "Shelby: Jack Dempsey's Biggest Bout" by Tim Christenson — Northwest Montana History Museum, 6:30 to 8 p.m., 309-0958 | **KALISPELL**

March 18

Flathead Valley Community Band "Celebrating America's 250th - Thru the Ages" Concert — Flathead High School Auditorium, 7:30 p.m., 270-1696 | **KALISPELL**

SOUTHWEST

February 3

Ladies of Love — CCMT at Homestead Organics Farm, 10:30 a.m. to 1 p.m., or 5:30 to 9 p.m., CultivatingConnectionsMT.org | **HAMILTON**

February 7

Sourdough Basics Workshop — CCMT at Homestead Organics Farm, 11 a.m. to 1 p.m. CultivatingConnectionsMT.org | **HAMILTON**

February 10

Wildfire Mitigation and Preparedness Class — Ravalli County Economic Development Authority, 6 to 8 p.m., 375-9416 | **HAMILTON**

February 25-28

Northern C Boys' & Girls' Divisional Basketball Tournament — Montana ExpoPark Pacific Steel & Recycling Arena, 727-8900 | **GREAT FALLS**

March 6

Hot Springs Adult Soak & Fun Night — CCMT at Sleeping Child Hot Springs, 5:30 to 10:30 p.m. CultivatingConnectionsMT.org | **HAMILTON**

March 7

Women's Wellness Retreat — CCMT at Sleeping Child Hot Springs, 10 a.m. to 8 p.m. CultivatingConnectionsMT.org | **HAMILTON**

March 8

Sunday Family Swim Day — CCMT at Sleeping Child Hot Springs, 10 a.m. to 2 p.m. or 3 to 7 p.m., CultivatingConnectionsMT.org | **HAMILTON**

March 14

Easter Market — Craft Market, Ravalli County Fairgrounds, 10 a.m. to 4 p.m., 360-6743 | **HAMILTON**

March 21-22

Hellegate Mineral Society presents Treasures of the Northwest — 31st annual gem, mineral, fossil, bead and lapidary show and sale, Hilton Garden Inn, Sat: 9 a.m. to 5 p.m., Sun: 10 a.m. to 5 p.m. | **MISSOULA**

NORTHEAST

March 21

Slam the Dam 10 — Non-competitive Fun Run/Walk across Fort Peck Dam, Registration is at 9 a.m., run/walk begins at 10 a.m., 480-9057 | **FORT PECK**

March 27

Schmeckfest — German festival of tasting followed by entertainment and silent and live auction, Lustre Christian High School, 5 to 7 p.m., 392-5735 | **LUSTRE**

March 28

MonDak Spring Soiree — Music by The McDades, hors d'oeuvres, beer & wine, a specialty mocktail, desserts, silent auction, gemstone raffle, wine pull & more, MonDak Heritage Center, 7 p.m., tickets: \$50, 433-3500 | **SIDNEY**

SOUTHEAST

February 14-15

Vendor Market — Big Sky Optimist Club Fundraiser, 505 Orchard Ave., doors open at 10 a.m., 855-2416 | **BILLINGS**

February 19

Health & Safety City College Expo — For high school students, register online at www.msubillings.edu/future/springexpos.htm | **BILLINGS**

February 25-March 1

Billings RV & Boat Show — MetraPark Expo Center, 256-2400 | **BILLINGS**

March 12

Transportation & Industry City College Expo — For high school students, register online at www.msubillings.edu/future/springexpos.htm | **BILLINGS**

March 27

MSU Billings Preview Day — Come check out MSUB during Preview Day, explore campus, programs and student life all in one visit. Register online at msubillings.edu/future/previewday | **BILLINGS**

YOUNG MONTANANS

RM invites youngsters to send in original art and poems. If we use it, we'll pay you \$10. **Mail to:** Young Montanans, P.O. Box 3469, Great Falls, MT 59403. **Email:** rural@mtco-ops.com. **Include:** Your name, age, address and your cooperative. *If you do not include this information, your submission will not be accepted.*

**SEND YOUR SPRING DRAWINGS
AND POEMS**



Elliana Nakonechny, 7, Columbia Falls | **FLATHEAD ELECTRIC**

Juliana Garcia, 11, Kalispell | **FLATHEAD ELECTRIC**

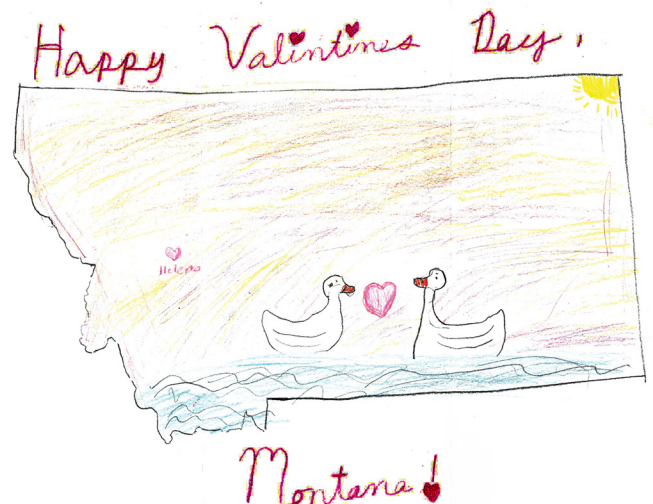


**HAPPY Valentine's
Day**



Annabelle Knudsen, 10, Laurel | **YELLOWSTONE VALLEY ELECTRIC**

Adi Horak, 9, Dutton | **SUN RIVER ELECTRIC**



READER PHOTOS

SEND US YOUR FAVORITE PHOTOS/ARTWORK

Please include: the photographer's/artist's name, address and hometown in the entry. *If you do not include this information, your submission will not be accepted.* If we use your entry we'll pay you \$25-\$100 (depending on size and location).

Send entries to: rural@mtco-ops.com. No more than 20 MB at a time. No prints please.



Anita Bozich Art and Photography

Taking a Break

A California quail rests on a branch in the Lee Metcalf National Wildlife Refuge. **Photo by Anita Bozich of Stevensville**

Dusting of Snow

A patch of moss is barely covered by snow in Kila. **Photo by Kaisley Jarvis of Kila**



Otter-ly Ridiculous

An otter family sits on the ice in Yellowstone National Park. **Photo by Dave Hopkins of Columbia Falls**

Winter Buck

A buck beds down. **Painting by Colton Eckert of Townsend**





The Magazine of the
Montana Electric Cooperatives'
Association

Visit us online: www.mtco-ops.com

Email: rural@mtco-ops.com



BASIN ELECTRIC  RELIABILITY

POWER YOU CAN
ALWAYS DEPEND ON

At Basin Electric, we understand that life doesn't stop when the going gets tough. No matter the season or storm our members face, reliable and affordable electricity for our members' homes, schools, and businesses is our mission. We'll do everything we can to keep fans running, the lights on, and the coffee brewing.

 **BASIN ELECTRIC
POWER COOPERATIVE**
A Touchstone Energy® Cooperative 